

ANIKET HEIGHTS

2 & 3 BHK LUXURY APARTMENT



Site Address

ANIKET HEIGHTS

Nr. Sthapatya Heights, Sardar Patel Ring Road,
Opp. Gopi Farm, Ognaj, Ahmedabad-380060

Contact No.: +91 93 75 556 556 | 93 77 556 556

Email: biyolainfracon@gmail.com

RERA - PROJECT REGISTRATION NUMBER

RERA : PR/GJ/AHMEDABAD/AHMEDABADCITY/AUDA/RAA09559/251221

Website : www.gujrera.gujarat.gov.in





ANIKET HEIGHTS

"Welcome to the life of your DREAMS"

Aniket Heights is a Spectacular residential only project consisting of luxurious **3 BHK** and **2 BHK** apartments.

Modern aesthetic design encourages families to gathers and create memories which develops beautiful friendships and lasting bonds.

HERE'S A REALITY
MORE BEAUTIFUL THAN YOUR DREAMS.

ANIKET
HEIGHTS

2 & 3 BHK LUXURY APARTMENT



ANIKET HEIGHTS

2 & 3 BHK LUXURY APARTMENT



IF YOU EVER BELIEVED IN THE
BEAUTY OF YOUR DREAMS...



ANIKET HEIGHTS

2 & 3 BHK LUXURY APARTMENT



A THING OF BEAUTY
IS JOY FOREVER



ANIKET HEIGHTS

2 & 3 BHK LUXURY APARTMENT



YOUR DREAMS DESERVE TO BE FULFILLED
DREAMS SHAPED INTO DREAM HOMES



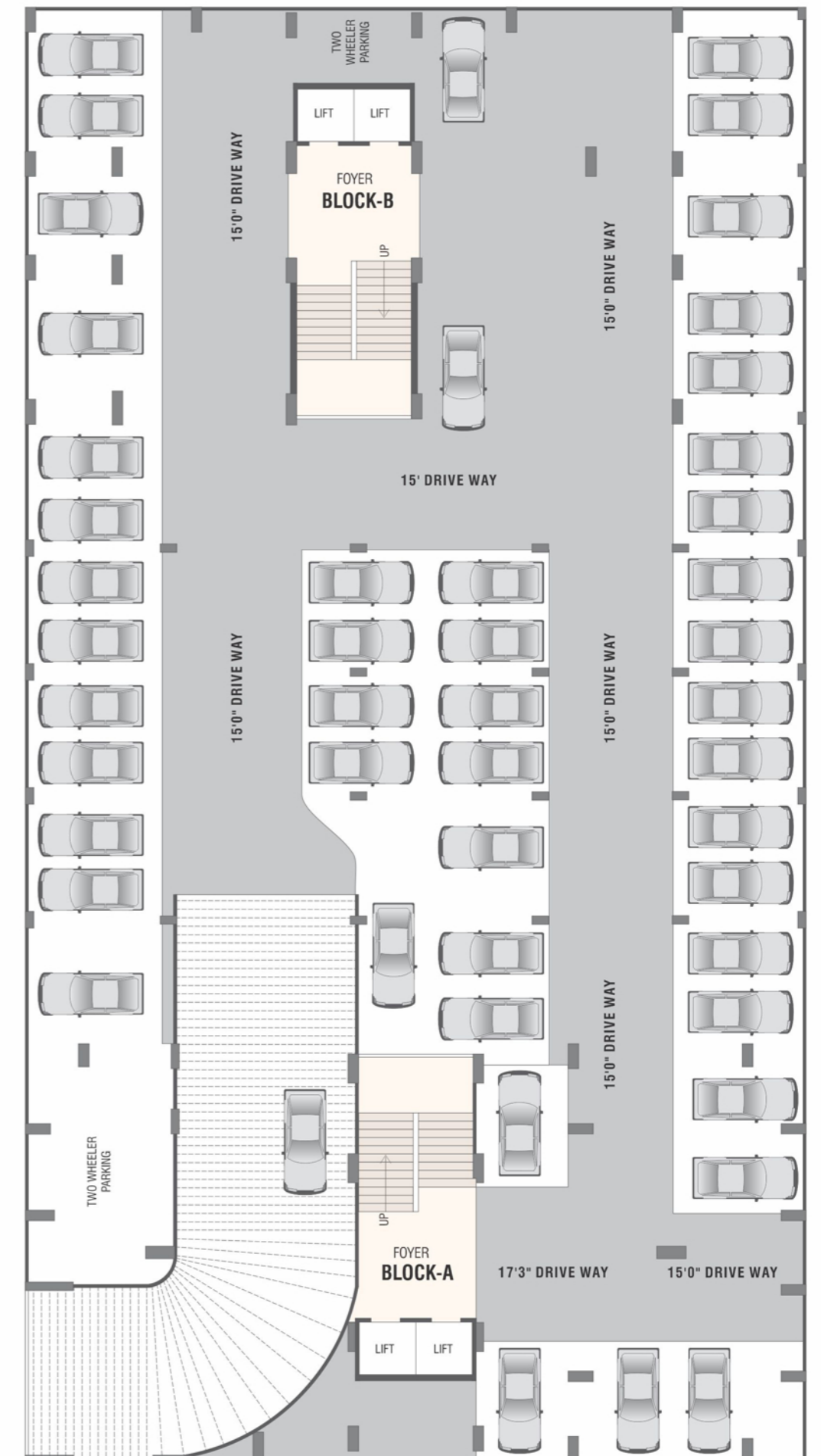
ANIKET HEIGHTS

2 & 3 BHK LUXURY APARTMENT





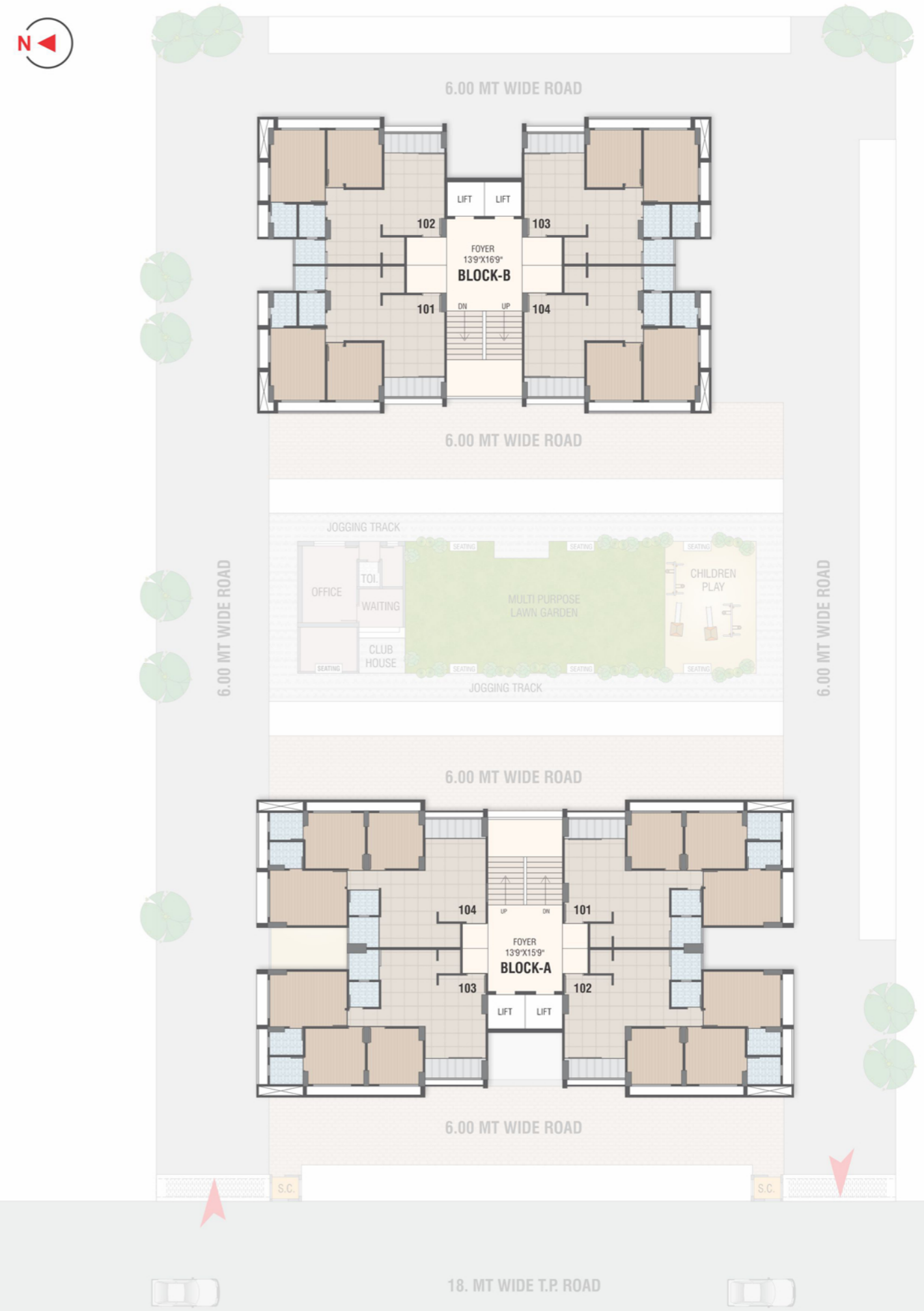
BASEMENT PLAN



GROUND FLOOR PLAN



TYPICAL FLOOR PLAN



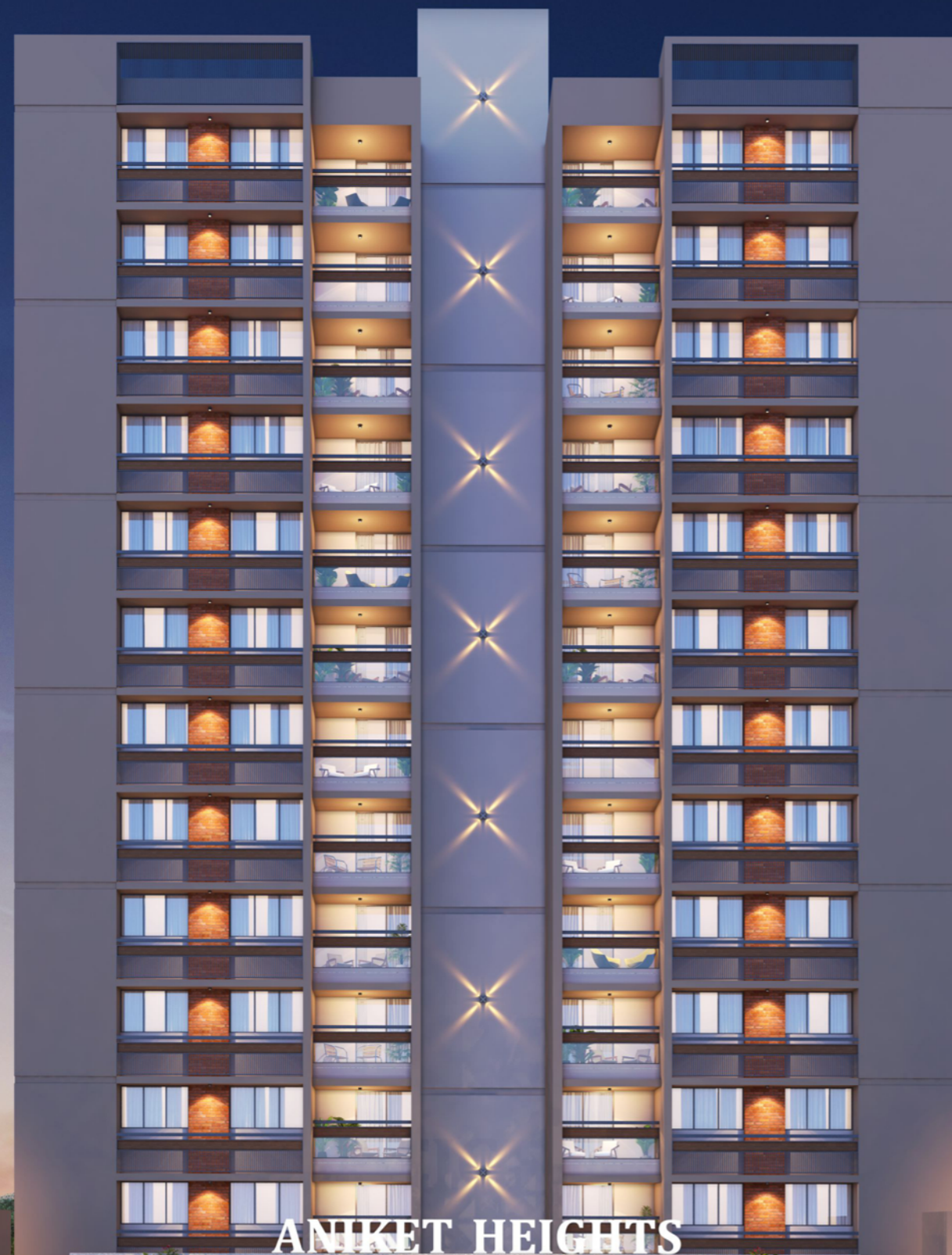
BLOCK_A 3 BHK



BLOCK_B 2 BHK



REDEFINE NEW HEIGHTS
OF YOUR STATUS...



ANIKET HEIGHTS



*images are for representation purpose only



*images are for representation purpose only



*images are for representation purpose only

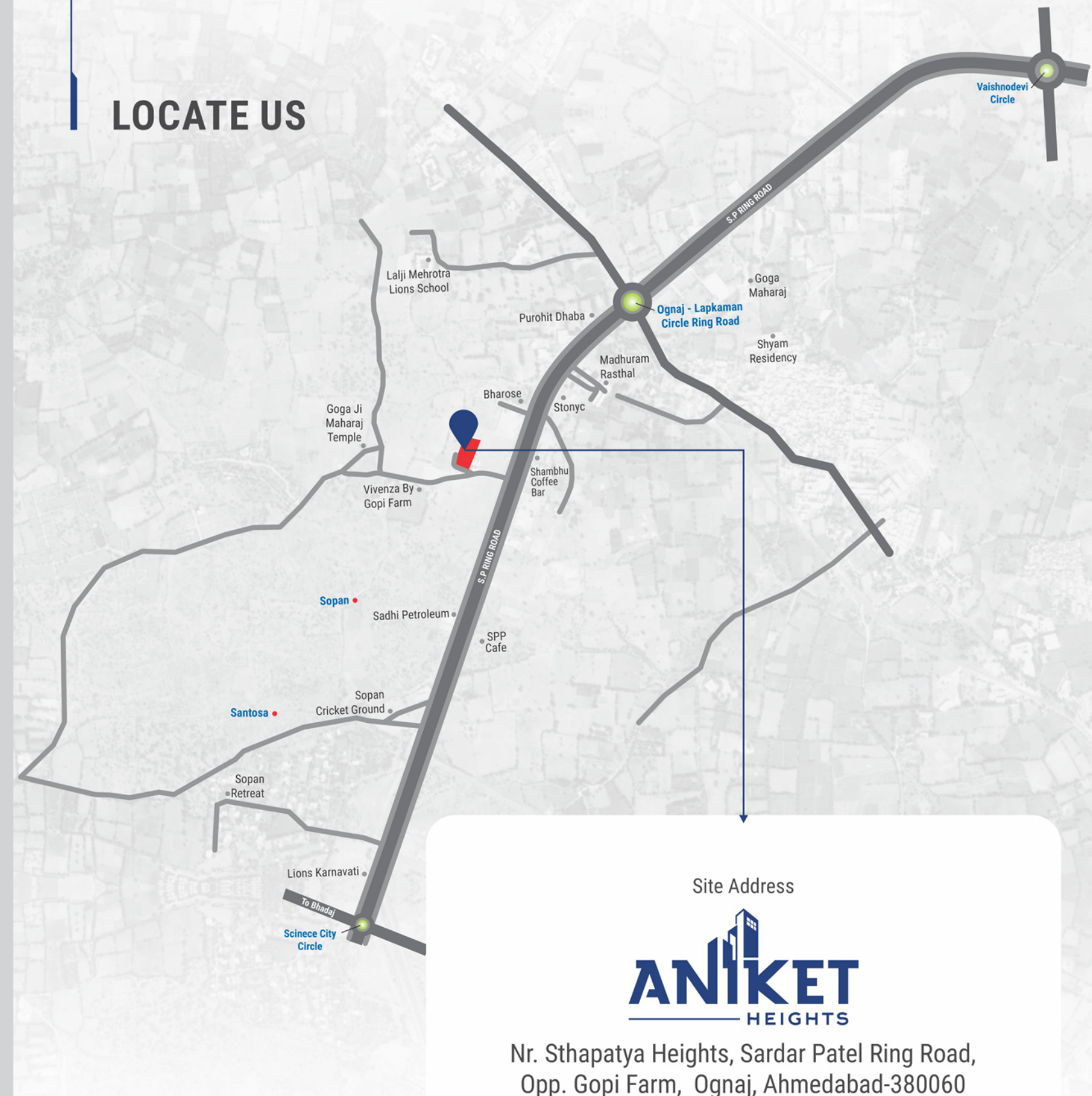
SPECIFICATION

- 
RCC
 » Quality controlled earthquake resistant,
 » R.C.C. framed structure.
- 
FLOORING
 » Vitrified flooring in complete apartment.
- 
KITCHEN
 » Granite platform with SS sink Decorative tiles dado up to lintel level.
- 
KITCHEN WASH AREA
 » Kota stone floor with dado of glazed tiles Electric point for washing machine.
- 
BATHROOMS / PLUMBING
 » C.P fitting or equivalent Sanitary Ware Cera or Equivalent
- 
DOORS
 » Main Door : Flush doors with Wooden Frames & Laminate finish.
 » Other Door : Flush doors with Wooden Frames.
- 
SECURITY
 » Security with CCTV surveillance.
- 
WINDOWS
 » Powder coated aluminum section with good quality glass.
- 
ELECTRIFICATION
 » Adequate points as per architecture drawings Concealed electrification with good quality ISI copper wire/cable Branded modular switches and accessories and distribution board with MCB & ELCB.
- 
PAINT
 » Internal walls finished with wall putty.
 » External walls with apex paint.
- 
LIFT
 » Fully automatic elevators.
- 
TERRACE
 » With required water proofing on terrace.

AMENITIES

- 
Attractive Main Gate
- 
Entrance Foyer
- 
CCTV Camera
- 
24X7 Security
- 
Beautiful Garden
- 
Senior Citizen Sitout
- 
Gymnasium
- 
Children Play Area
- 
2 Lift in All Block
- 
24X7 Water Supply
- 
D.G. Backup System
- 
Fire Safety
- 
Street Light
- 
R.C.C. Road
- 
Basement Parking

LOCATE US



Site Address

ANIKET
HEIGHTS

Nr. Sthapatya Heights, Sardar Patel Ring Road,
Opp. Gopi Farm, Ognaj, Ahmedabad-380060

Contact No. : +91 93 75 556 556 | 93 77 556 556
Email : biyolainfracon@gmail.com

Architect



Structural Engineer



Project By

BIYOLA
GROUP

» All right reserved to Developer for any changes in plan & specification. » GEB, AUDA, Stamp duty, legal charges, VAT, GST Labourcess, Narmada water connection & Initial maintenance contribution will be levied extra. » Change in external elevation shall not be permitted Internal chages shall be done only with prior permission and shall be charged extra in advance. » Details & dimensions in brochure are indicative & for the tentative representation only which should not be treated as legal documents. » possession of the apartment shall be given only after full payment. » Any additional charges or duties levied by the Govt/local authorities during ar after the completion of the scheme will be borne by the purchaser. » selling of the unit and sale deed of the unit is only done on the basis of carpet area as per RERA. » Corpet area asper RERA does not indude exterior walls, balcony, wash area, foyer, flowerbed, etc. of the particular apartment.